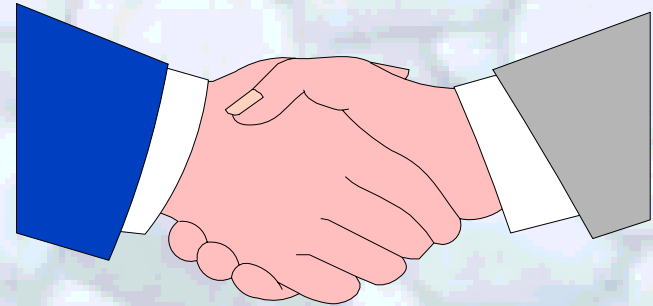
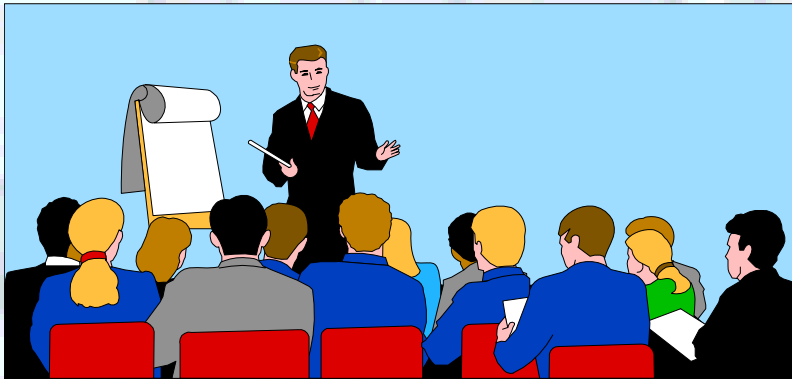


The Uses of Aggregate in Our Everyday Lives



OAIMA Represents 95% of Aggregate and Industrial Minerals Suppliers in Ohio

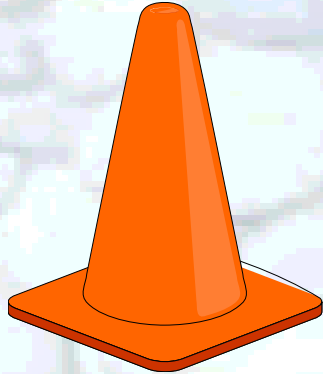


- OAIMA Works Closely With Regulatory Agencies to Insure Safe, Efficient, Environmentally Friendly Operations that Produce Quality Products and Are “Good Neighbors”



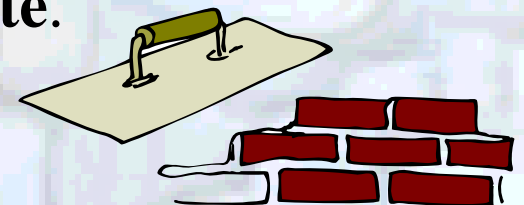
What Is Aggregate & Industrial Minerals?

- Aggregate - Any combination of sand, gravel and crushed stone in their natural or processed state used in construction and building activities.
- Industrial Minerals- geological materials which are mined for their commercial value. They are used in their natural state or after processing either as raw materials or as additives in a wide range of applications.



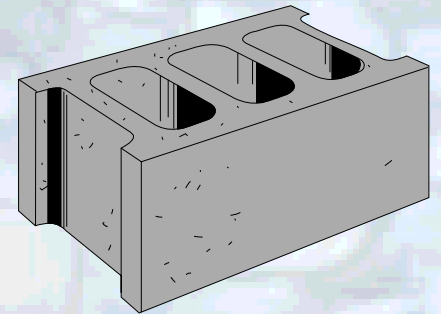
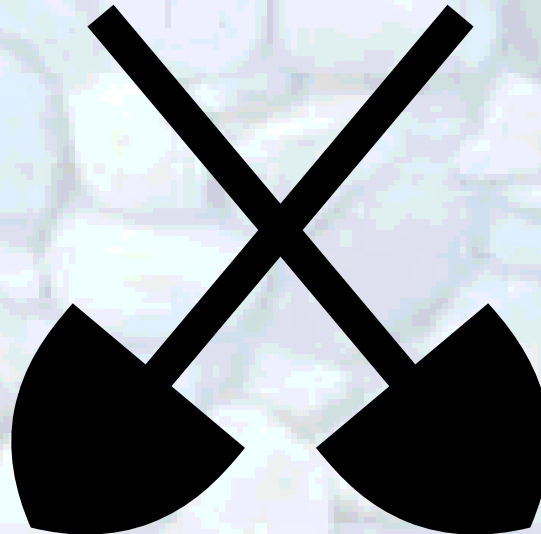
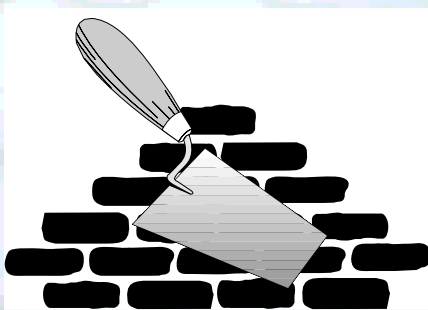
Aggregate Quick Facts

- **85,000 Tons of Aggregate Per 1 Mile of a Four Lane Highway.**
- **11 tons of Aggregate & Industrial Minerals for each Ohio Resident.**
- **The Average Home Requires 106 Tons of Aggregate.**
- **The Average Size School or Hospital Requires 15,000 Tons of Aggregate.**



Ohio's Construction Aggregates

- **Natural Aggregate - 4th Nationally**
- **Limestone - 4th Nationally**
- **Slag - Top 4 (2nd in Steel Manufacturing)**

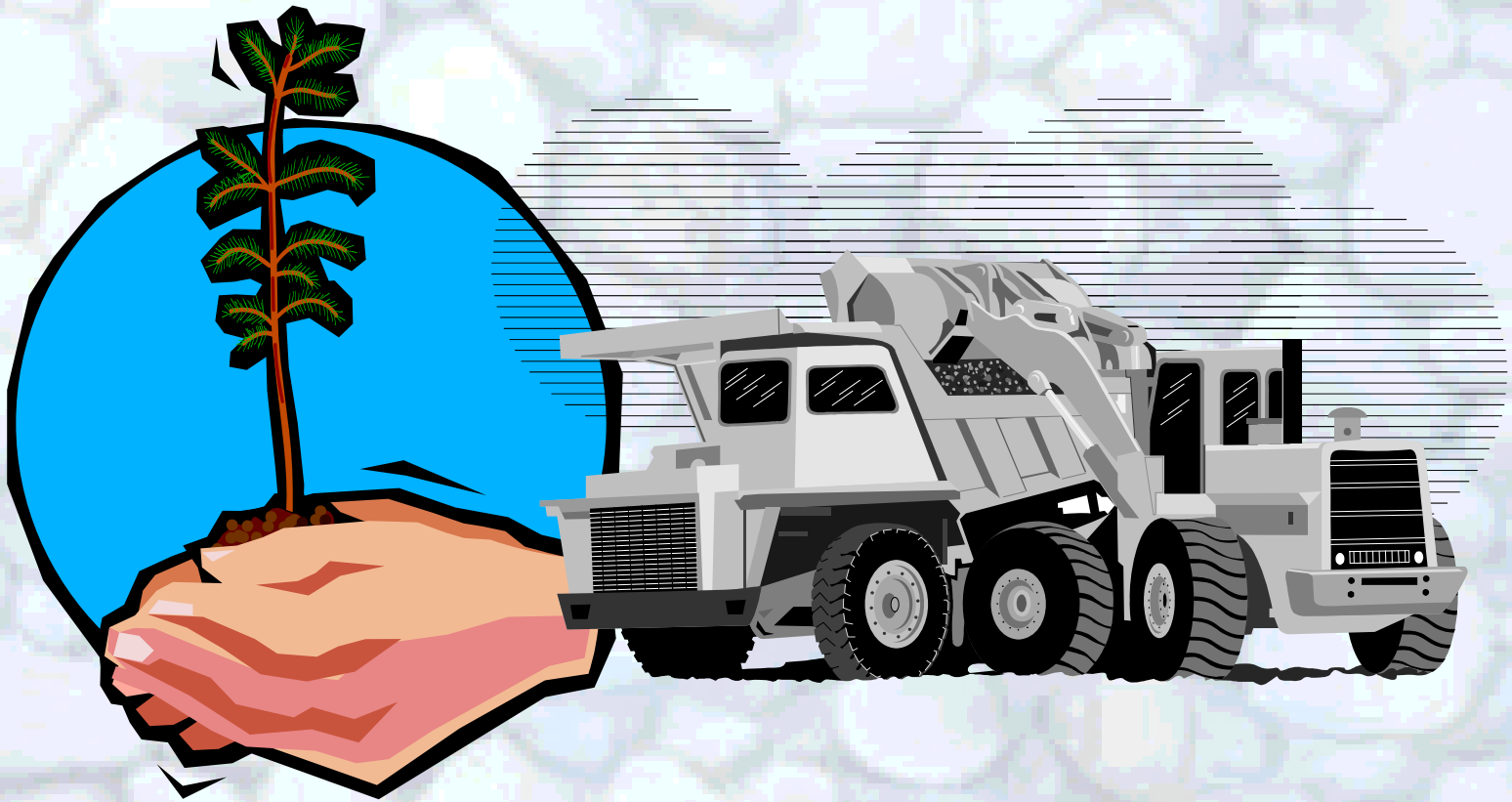


Ohio's Industrial Minerals

- **Clay & Shale - 5th Nationally**
- **Sandstone & Industrial Sands - 2nd Nationally**
- **Salt - 5th Nationally**
- **Gypsum - 14th Nationally**
- **Cement - 10th**

Overall Ohio is 10th nationally in Aggregate and Mineral Production

“If it can’t be grown, it has to be mined”



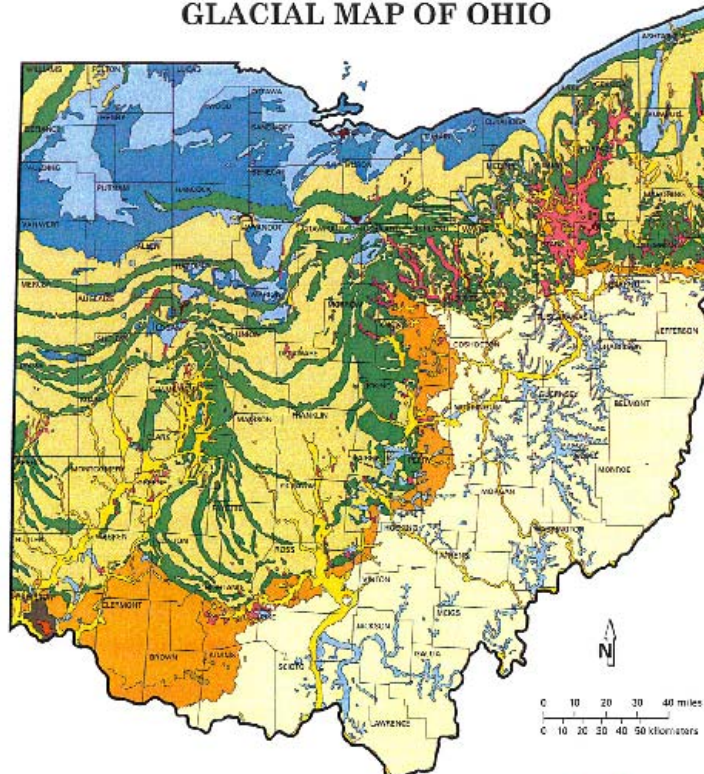
Resources Are “Where they Are”

STATE OF OHIO
Ted Strickland, Governor

DEPARTMENT OF NATURAL RESOURCES
Sean D. Logan, Director

DIVISION OF GEOLOGICAL SURVEY
Lawrence H. Wickstrom, Chief

GLACIAL MAP OF OHIO

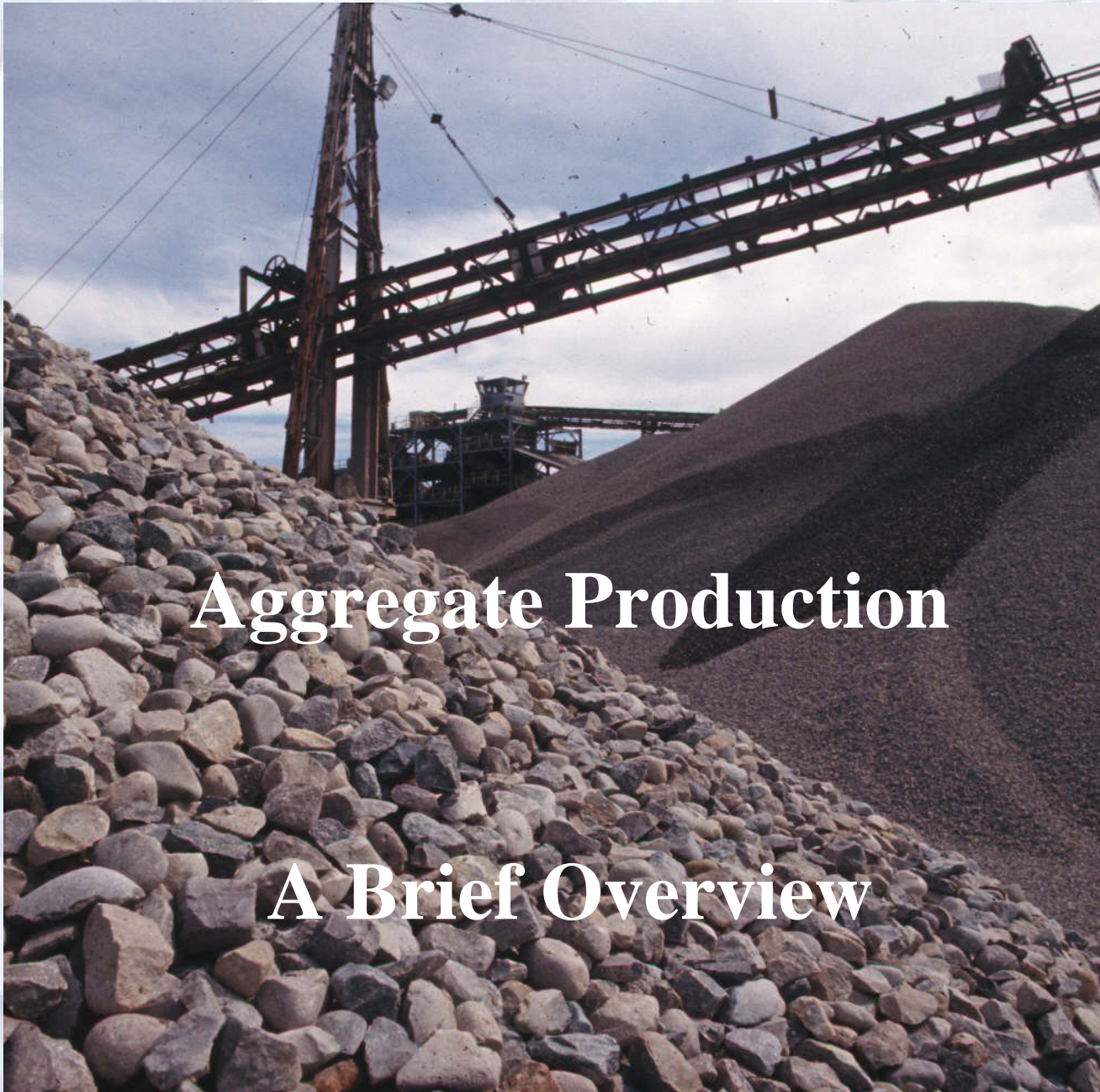


WISCONSINAN (14,000 to 24,000 years old)	ILLINOIAN (130,000 to 300,000 years old)	PRE-ILLINOIAN (older than 800,000 years)	Kames and eskers
Ground moraine	Ground moraine	Ground moraine	Outwash
Wave-planed ground moraine	Dissected ground moraine	Dissected ground moraine	Lake deposits
Ridge moraine	Hummocky moraine		Peat
			Colluvium



Reprinted with permission from the Division of Geological Survey, 2006. Glacial map of Ohio. Ohio Department of Natural Resources, Division of Geological Survey. <http://www.dnr.state.oh.us>. Code: 12000330.





Aggregate Production

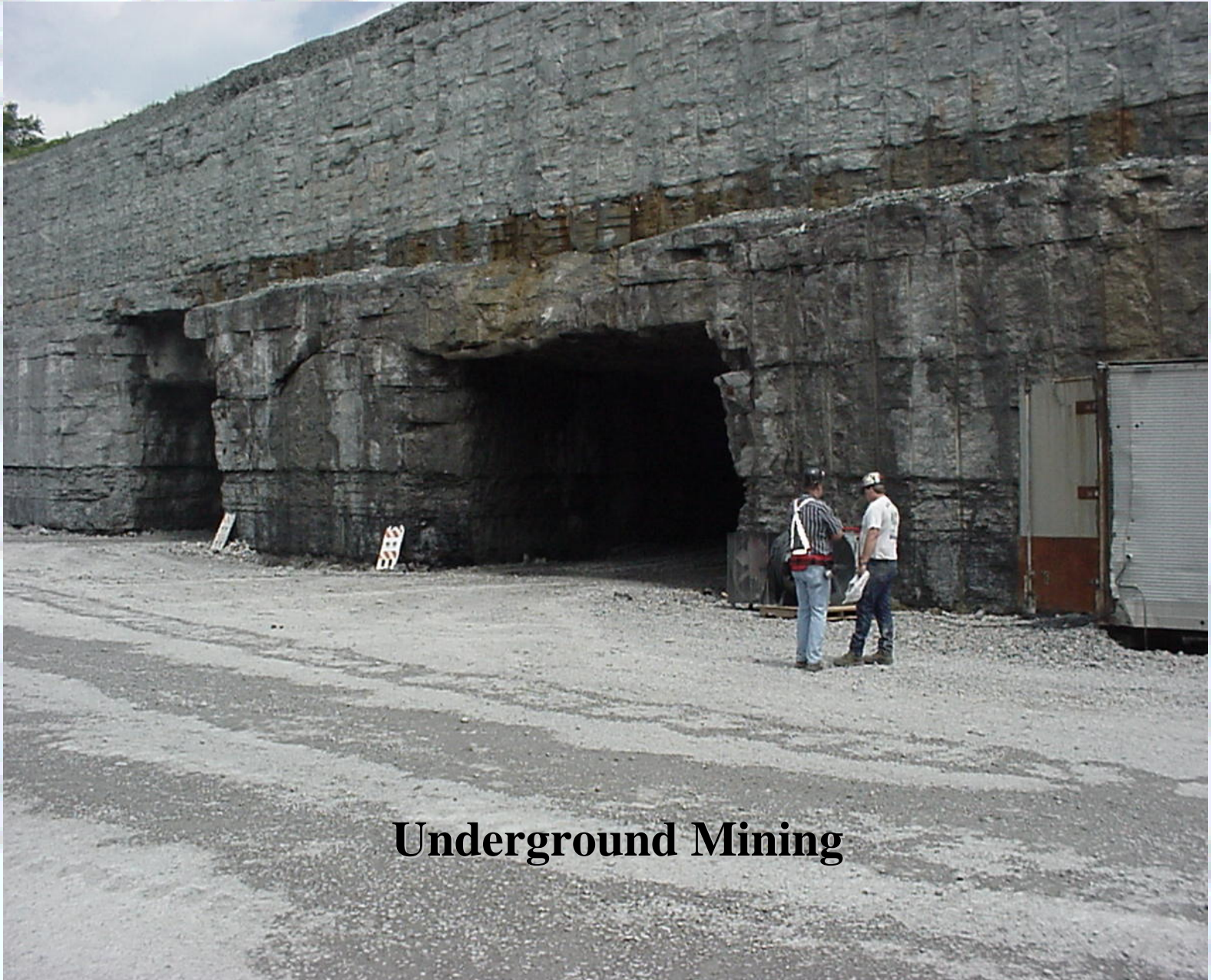
A Brief Overview

Our Process.....

BLASTING

Bore holes are loaded in the pit area of the blast site.





Underground Mining



We Also Dredge the Rock....

DREDGING: Sand and Gravel deposited from glaciers many, many years ago..





Our Process.....

HAULING

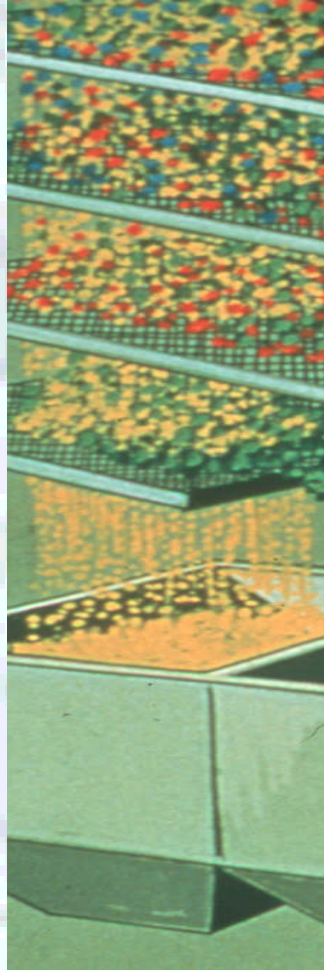
Wheel loaders haul the broken rock and load it into haul trucks. Then the rock is transported to the processing plant.



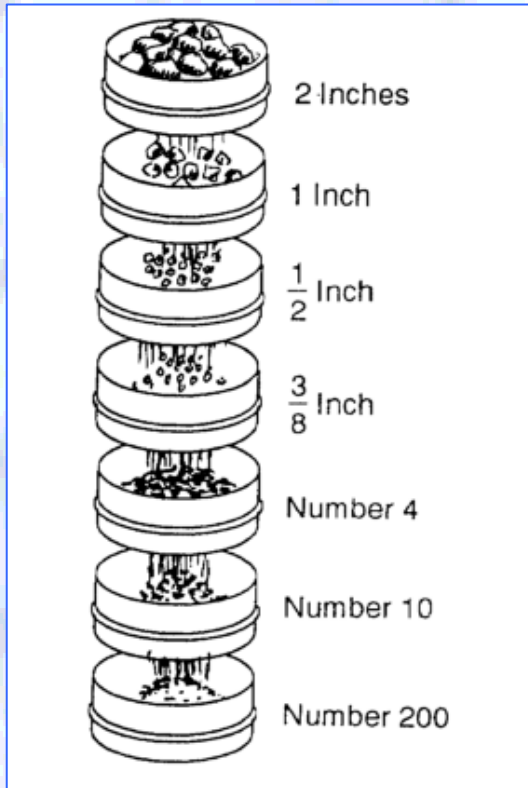
Haul trucks carry from 75-90 tons – do you know what that is in pounds?

Crushing





Aggregate Gradation



Specifications

ODOT No. 57's

<u>Sieve Size</u>	<u>Percent Passing</u>
1-1/2"	100
1"	95-100
3/4"	----
1/2"	25-60
3/8"	----
#4	0-10
#8	0-5

Our Process.....

STOCKPILING

After the crushing station, the rock is stored in a variety of stockpiles.





Our Process.....

DISTRIBUTION

The rock is transported by truck, rail or waterway to the customer.



Cost Doubles for Every 10 Miles of Transport -(over the road)



Aggregate Base Construction

- **Usually 100% Aggregate**
- **Sometimes Stabilized with Portland Cement, Lime or Asphalt Cement**



Aggregate Base



Portland Cement Concrete

- **About 85% Aggregate per Cubic Yard**
- **May contain miscellaneous fillers or reinforcement**



Ready-Mixed Concrete

PCC Paving On Aggregate Base





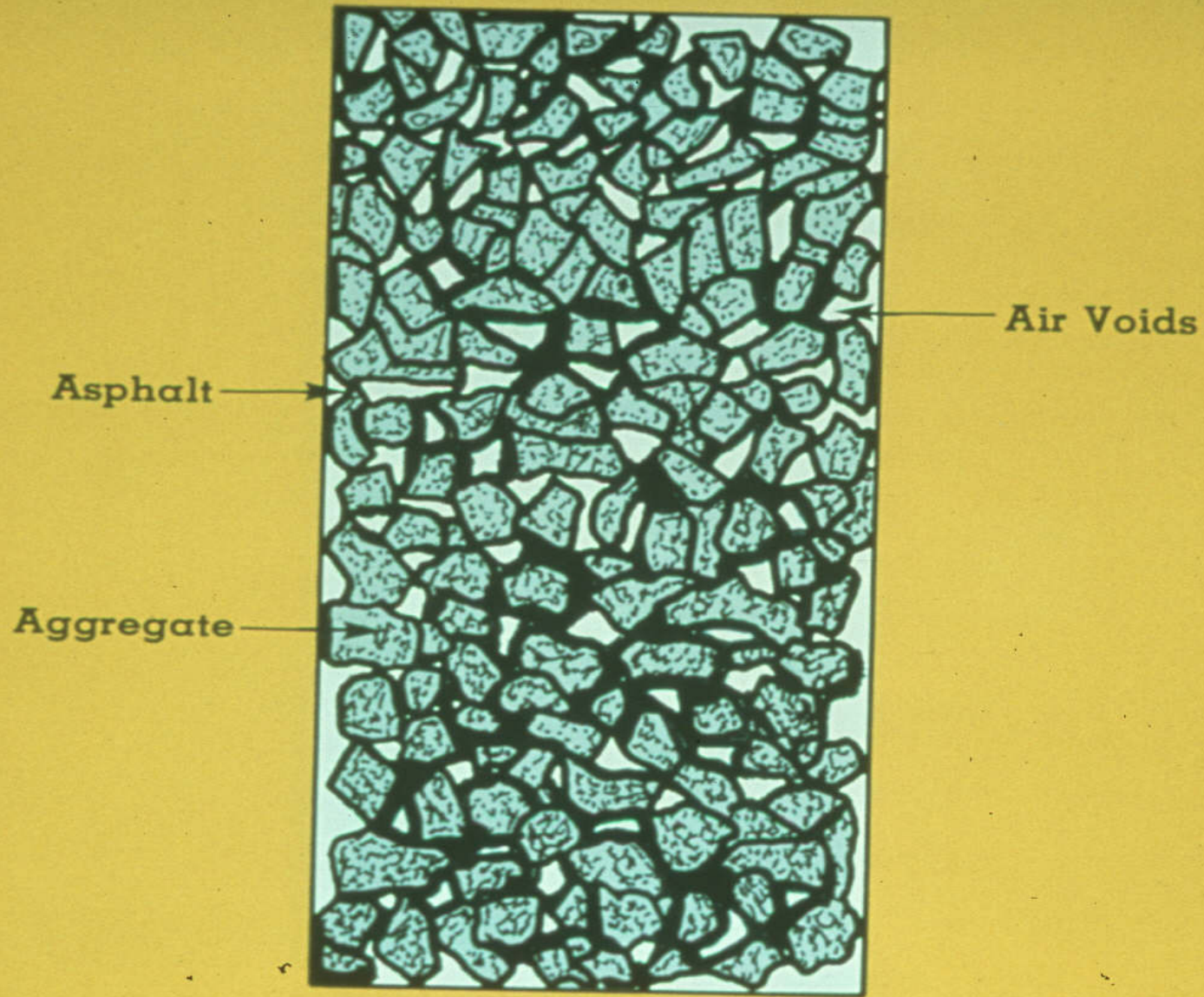
Road Construction

FINISHED PRODUCT



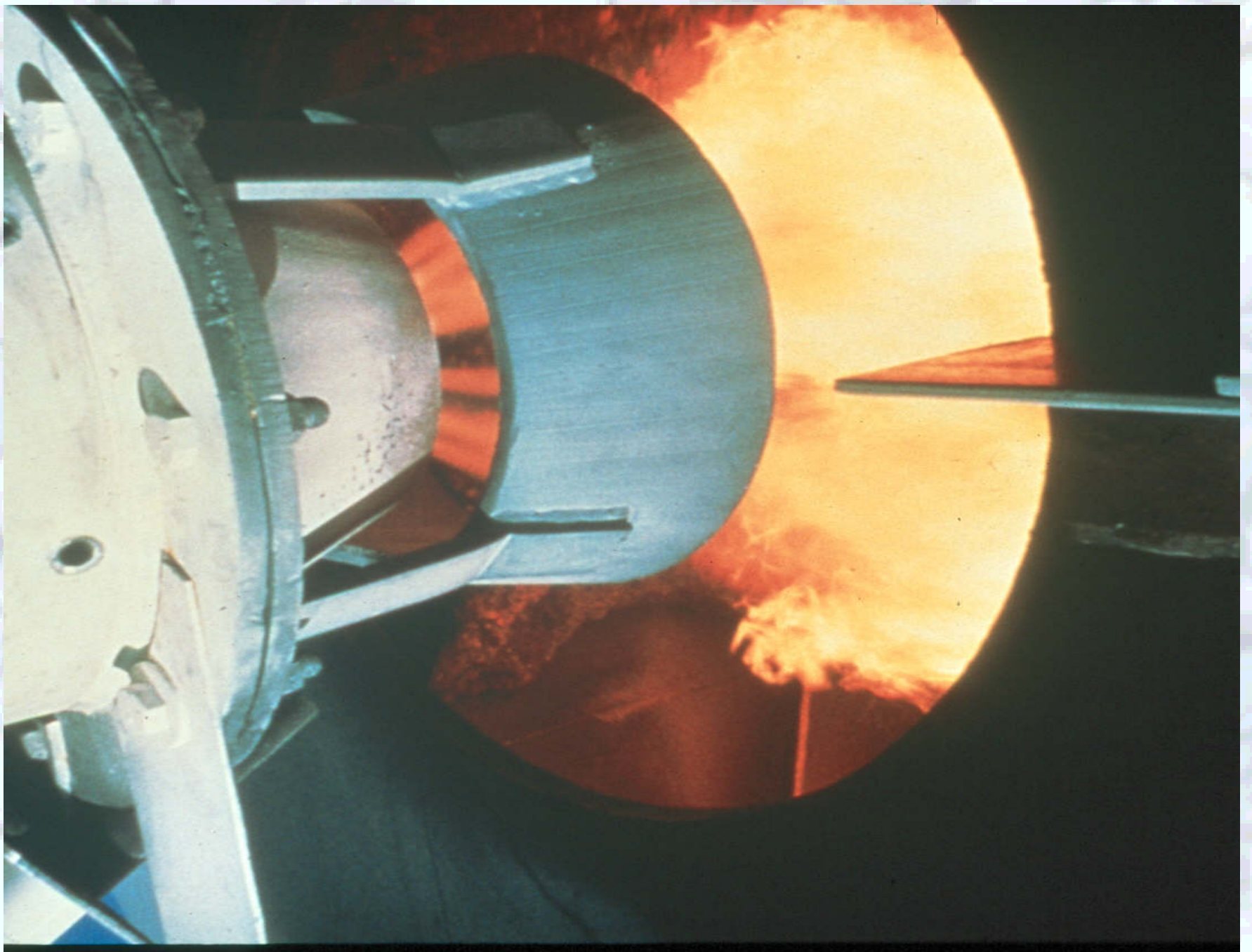
Asphalt Concrete

- **About 95% Aggregate per Ton**



Compacted Asphalt Mix Specimen





Asphalt with Paver





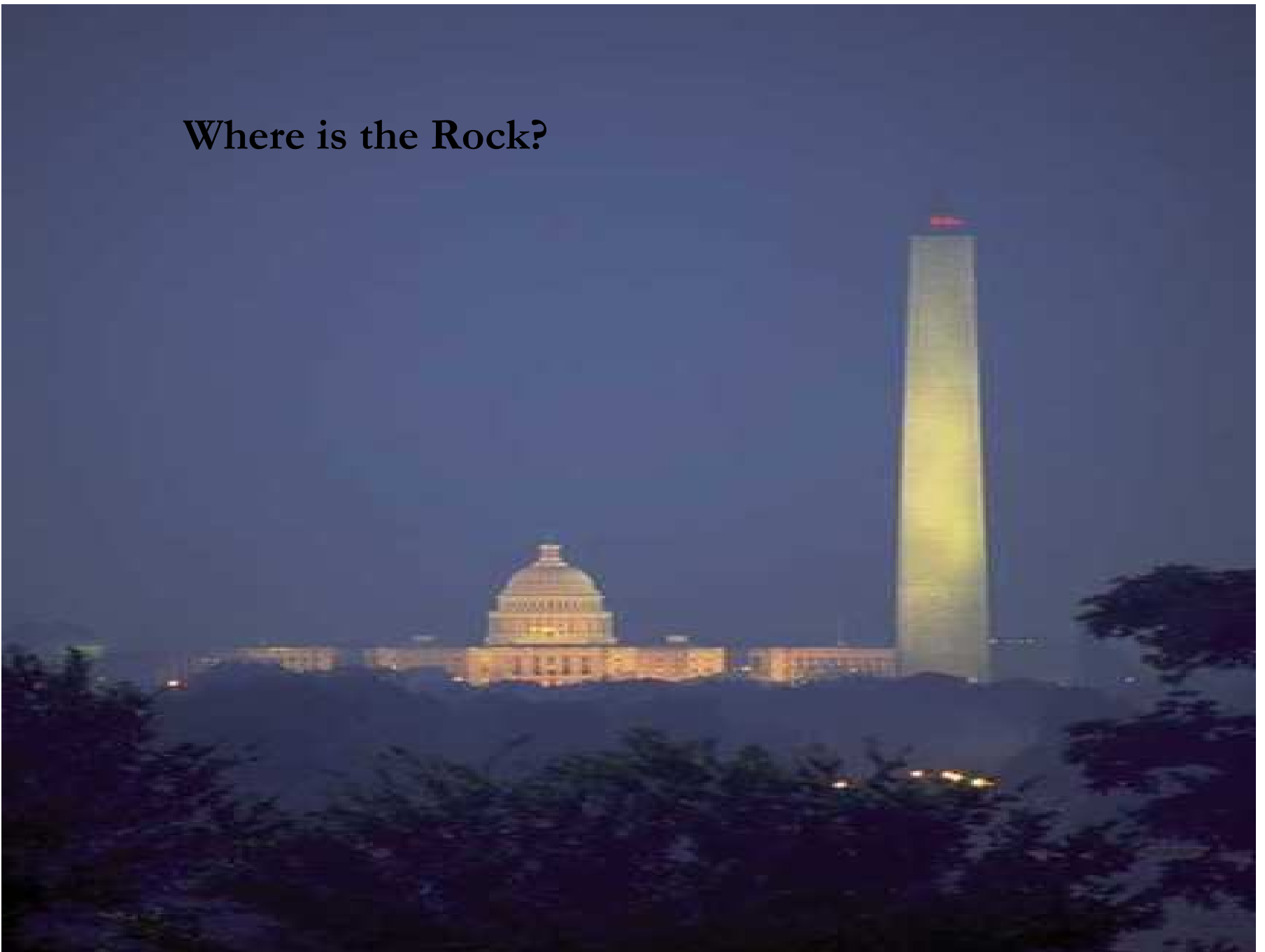
Reclamation







Where is the Rock?





Educational References:

www.oaima.org

www.mii.org

<http://www.dnr.state.oh.us/tabid/7921/Default.aspx>

[Ohio Rocks!://www.cetconnect.org/ohiorocks/](http://www.cetconnect.org/ohiorocks/)

